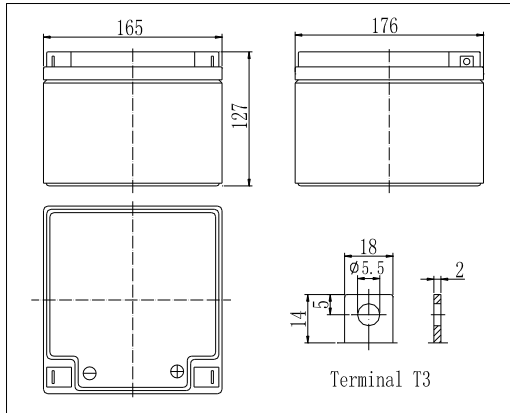
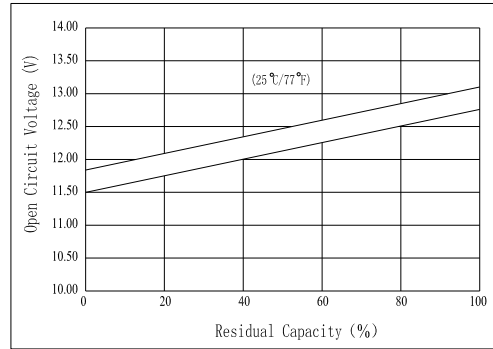


**Dimensions**



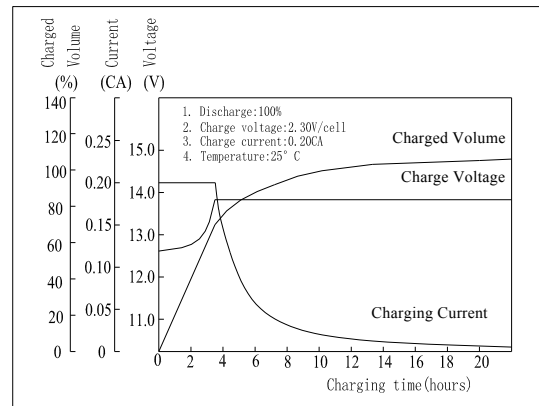
**The Relationship for Open Circuit Voltage and Residual Capacity (25°C)**



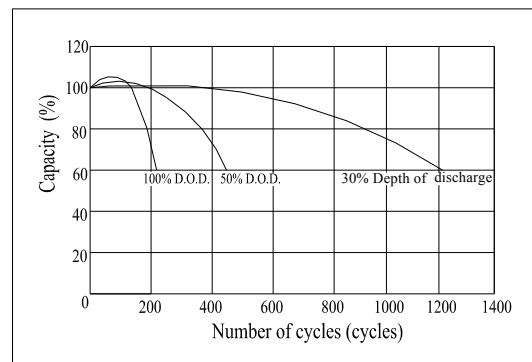
**Specifications**

Nominal Voltage		12 V
Capacity(20HR, 25°C)		26Ah
Dimension	Length	165mm (6.50inch)
	Width	176mm (6.939inch)
	Height	127mm (5.0inch)
	Total Height	127mm (5.0inch)
Approx. Weight		8.4kg (18.5lbs)
Internal resistance (Fully charged, 25°C)		Approx. 12m Ω
Capacity affected by temperature (20HR)	40°C	102%
	25°C	100%
	0°C	85%
	-15°C	65%
Self-discharge (25°C)	3 month	Remaining Capacity: 91%
	6 month	Remaining Capacity: 82%
	12 month	Remaining Capacity: 65%
Nominal operating temperature		25°C ±3°C(77°F ±5°F)
Operating temperature range		-15°C ~50°C (5°F ~122°F)
Float charging voltage(25°C)		13.60 to 13.80V
Cyclic charging voltage(25°C)		14.50 to 14.90V
Maximum charging current		7.8A
Terminal material		Copper
Maximum discharge current		390A(5 sec.)

**Charging Characteristics(25°C)**



**Cycle Life(25°C)**



Note: Floating life at 20°C designed for 3 to 5 years.

- ◆ Absorbent glass mat technology;
- ◆ Recognized by UL & CE;
- ◆ ABS container.

**Constant Current Discharge Characteristics (A, 25°C)**

F.V/TIME	5min	10min	15min	30min	60min	3h	5h	10h	20h
9.60V	95.0	65.0	46.5	28.2	16.2	6.93	4.51	2.47	1.30
10.2V	90.2	61.8	44.6	27.2	15.7	6.80	4.42	2.43	1.30
10.8V	84.8	58.0	42.4	26.0	15.0	6.56	4.28	2.37	1.25

**Constant Power Discharge Characteristics (Watt, 25°C)**

F.V/TIME	5min	10min	15min	30min	60min	3h	5h	10h	20h
9.60V	1060	733	530	323	188	82.3	53.8	29.6	15.6
10.2V	1006	697	508	312	182	80.8	52.8	29.1	15.6
10.8V	946	654	483	280	174	77.9	51.1	28.4	15.0