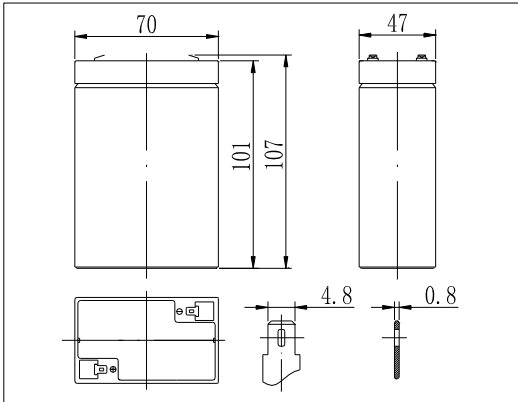
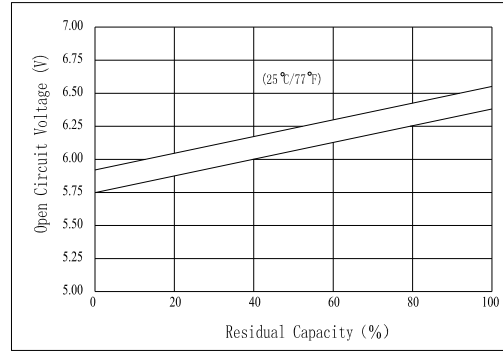


Dimensions



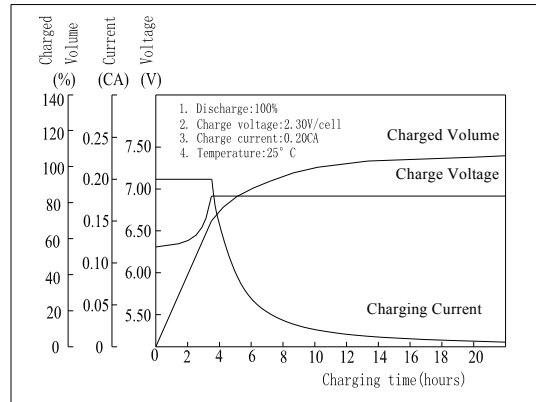
The Relationship for Open Circuit Voltage and Residual Capacity (25°C)



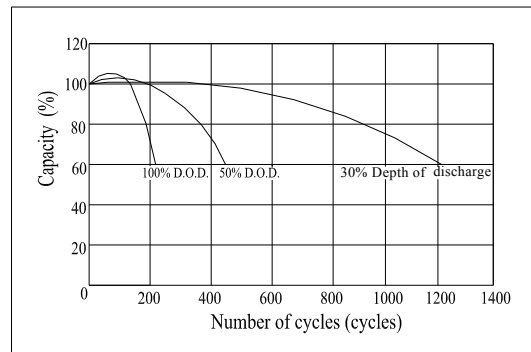
Specifications

Nominal Voltage		6 V
Capacity(20HR, 25°C)		5Ah
Dimension	Length	70mm (2.76inch)
	Width	47mm (1.85inch)
	Height	101mm (3.98inch)
	Total Height	107mm (4.21inch)
Approx. Weight		0.83kg (1.83lbs)
Internal resistance (Fully charged, 25°C)		Approx. 20m Ω
Capacity affected by temperature (20HR)	40°C	102%
	25°C	100%
	0°C	85%
	-15°C	65%
Self-discharge (25°C)	3 month	Remaining Capacity: 91%
	6 month	Remaining Capacity: 82%
	12 month	Remaining Capacity: 65%
Nominal operating temperature		25°C ±3°C(77°F ±5°F)
Operating temperature range		-15°C ~50°C (5°F ~122°F)
Float charging voltage(25°C)		6.80 to 6.90V
Cyclic charging voltage(25°C)		7.25 to 7.45V
Maximum charging current		1.5A
Terminal material		Copper
Maximum discharge current		75A(5 sec.)

Charging Characteristics(25°C)



Cycle Life(25°C)



Note: Floating life at 20°C designed for 3 to 5 years.

- ◆ Absorbent glass mat technology;
- ◆ Recognized by UL & CE;
- ◆ ABS container.

Constant Current Discharge Characteristics (A, 25°C)

F.V/TIME	5min	10min	15min	30min	60min	3h	5h	10h	20h
4.80V	18.5	11.8	9.50	5.75	3.20	1.27	0.87	0.45	0.25
5.10V	17.6	11.2	9.12	5.52	3.07	1.25	0.86	0.44	0.25
5.40V	16.5	10.5	8.66	5.24	2.92	1.23	0.84	0.44	0.24

Constant Power Discharge Characteristics (Watt, 25°C)

F.V/TIME	5min	10min	15min	30min	60min	3h	5h	10h	20h
4.80V	103	66.6	54.2	32.9	18.5	7.54	5.21	2.68	1.50
5.10V	98.1	63.2	52.0	31.6	17.8	7.43	5.13	2.66	1.50
5.40V	92.2	59.4	49.4	30.0	16.9	7.28	5.03	2.66	1.44